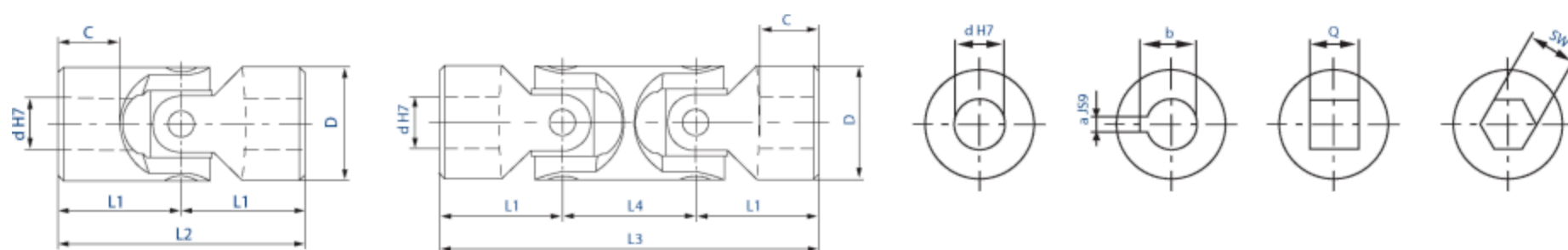




# Universal joints stainless steel

## Specifications:

- Material 1.4301 (AISI 304)
- Suitable up to a maximum speed of 300 (1/min)
- Maximum articulation angle 45° for each joint
- Type X; single universal joint
- Type XD; double universal joint
- According to DIN 808
- Available with finish bore H7. On request with keyway, square bore or hexacon bore.



## Stainless steel 1.4301 universal joints with plain bearing to DIN 808

Type		Dimensions											Weight (kg)	
Single	Double	d (H7)	D	L1	L2	L3	L4	C	a (JS9)	b	Q (H8)	SW (H8)	X (kg)	XD (kg)
01X	01XD	6	16	17	34	56	22	8	2	7	6	6	0,05	0,08
02X	02XD	8	16	20	40	62	22	11	2	9	8	8	0,06	0,08
03X	03XD	10	22	24	48	74	26	12	3	11,4	10	10	0,11	0,15
04X	04XD	12	25	28	56	86	30	13	4	13,8	12	12	0,17	0,25
1X	1XD	16	32	34	68	104	36	16	5	18,3	16	16	0,32	0,45
3X	3XD	20	42	41	82	128	46	18	6	22,8	20	20	0,6	1
5X	5XD	25	50	54	108	163	55	26	8	28,3	25	25	1,35	2
6X	6XD	30	58	61	122	190	68	29	8	33,3	30	30	1,85	2,9

# Protection bellows

## Specifications:

- Neoprene rubber
- Resistant to acids, oils, greases, dust and moisture.

Type	A	B	C	Outer diameter universal joint
01M	28	34	15	16
02M	32	40	16,5	18
03M	40	45	20,5	22
04M	48	50	24,5	24/26
05M	52	56	27,5	28/29
1M	56	65	30,5	32
2M	66	72	35,5	36/37
3M	75	82	40	42
4M	84	95	45	45/47
5M	92	108	50	50/52
6M	100	122	56	58

